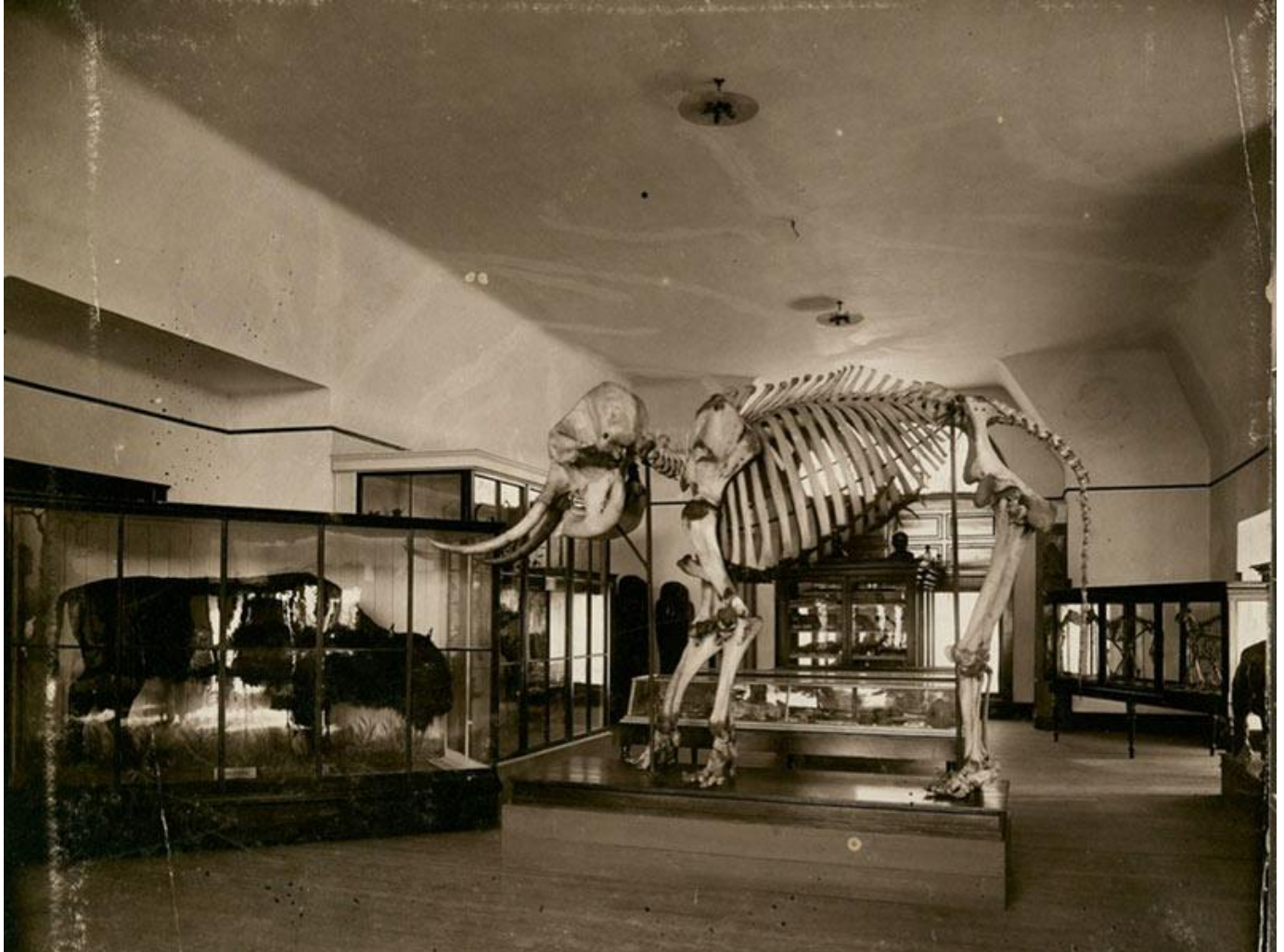


## Curated critters

November 03, 2016 2:15 PM Photo from Tulane University Archives  
newwave@tulane.edu



An elephant skeleton and stuffed bison are on display in the original Tulane Natural History Museum on the third floor of Gibson Hall around the turn of the century. Established in 1885 by a special grant from Paul Tulane, the museum was an exhibit-oriented facility displaying specimens purchased from private collections or donated from the World Industrial and Cotton Centennial Exposition held in New Orleans from 1884-1886. At its height it was said to be the only collection in existence that contained practically every species of native Louisiana bird.