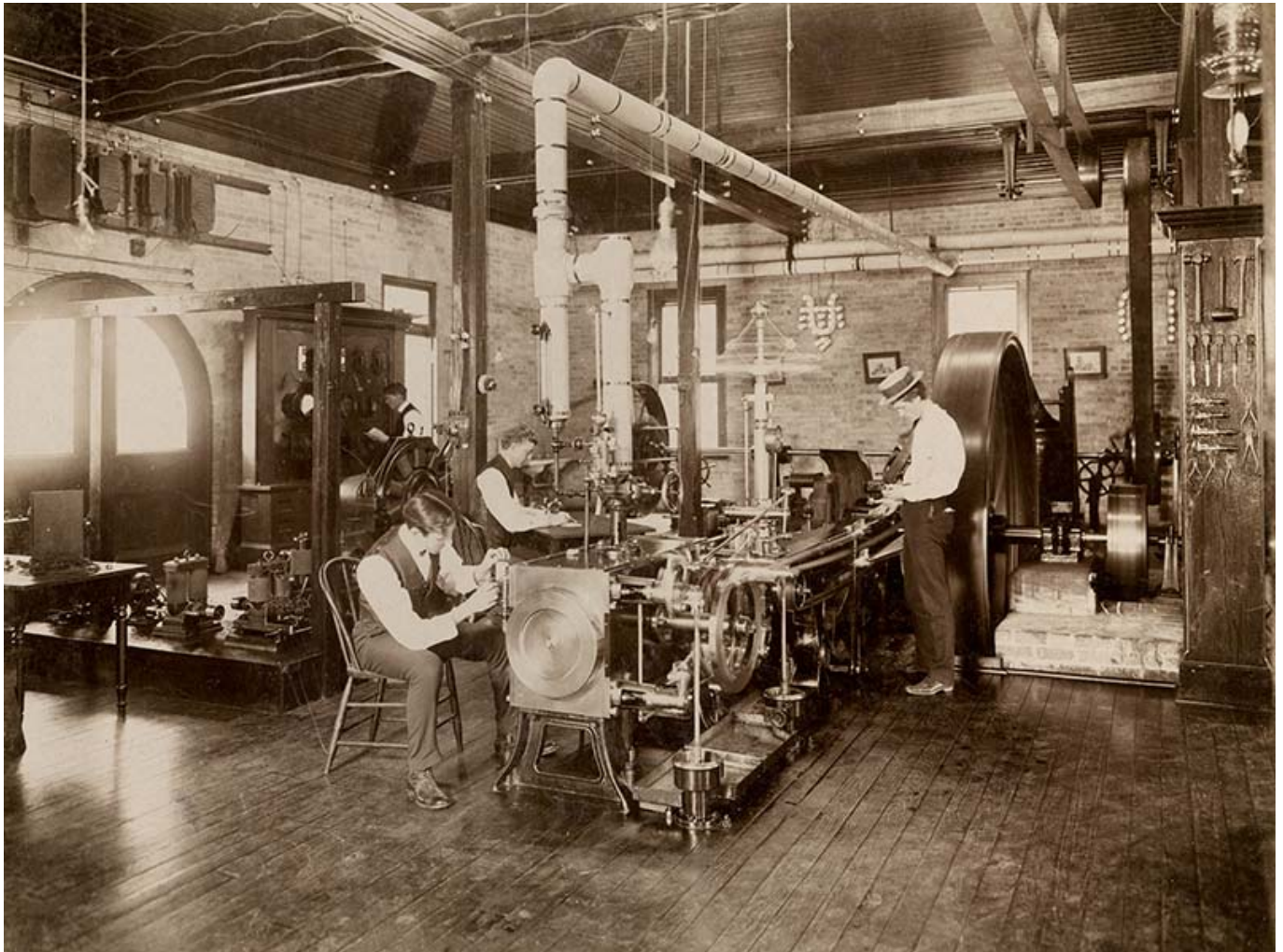


## Current event

June 01, 2017 2:00 PM

Photo from Tulane University Archives [newwave@tulane.edu](mailto:newwave@tulane.edu)



Engineering students, from left, T.M. Logan, A. Baldwin Wood and John S. Harris work in the Electrical Engineering Laboratory circa 1898. Wood later designed and installed the huge screw pumps that continue to drain rainwater from the streets of New Orleans today.