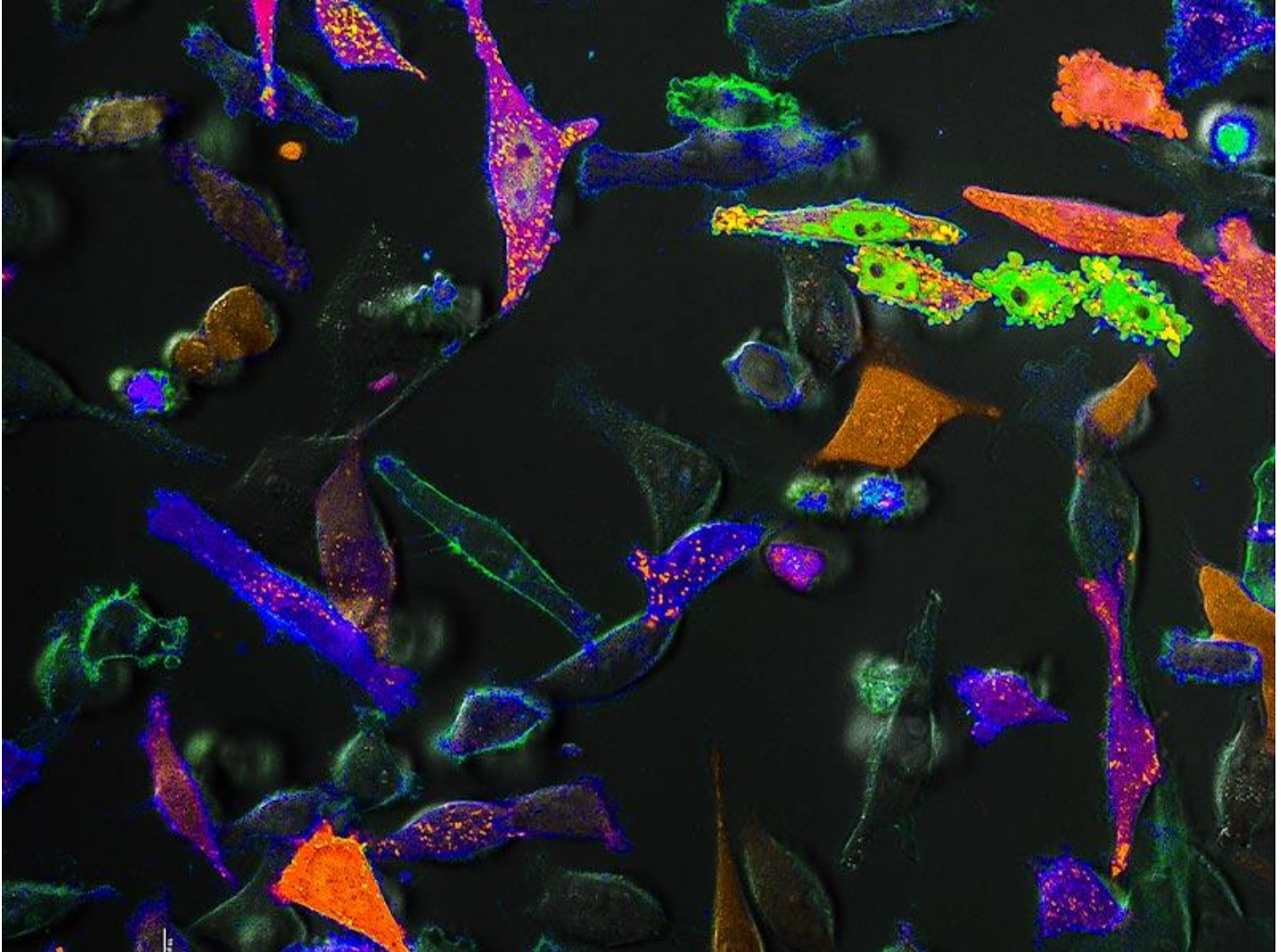


## Small, small world

July 18, 2017 1:15 PM Photo by W. Berkeley Kauffman  
newwave@tulane.edu



Modified cells with fluorescent proteins glow under a microscope in the Wimley Lab in the Department of Biochemistry. W. Berkeley Kauffman, a biochemistry doctoral student, works in the lab to develop peptides that deliver medicines to human cells. These peptides represent a valuable tool for scientists researching gene expression, anticancer agents and other therapeutics.