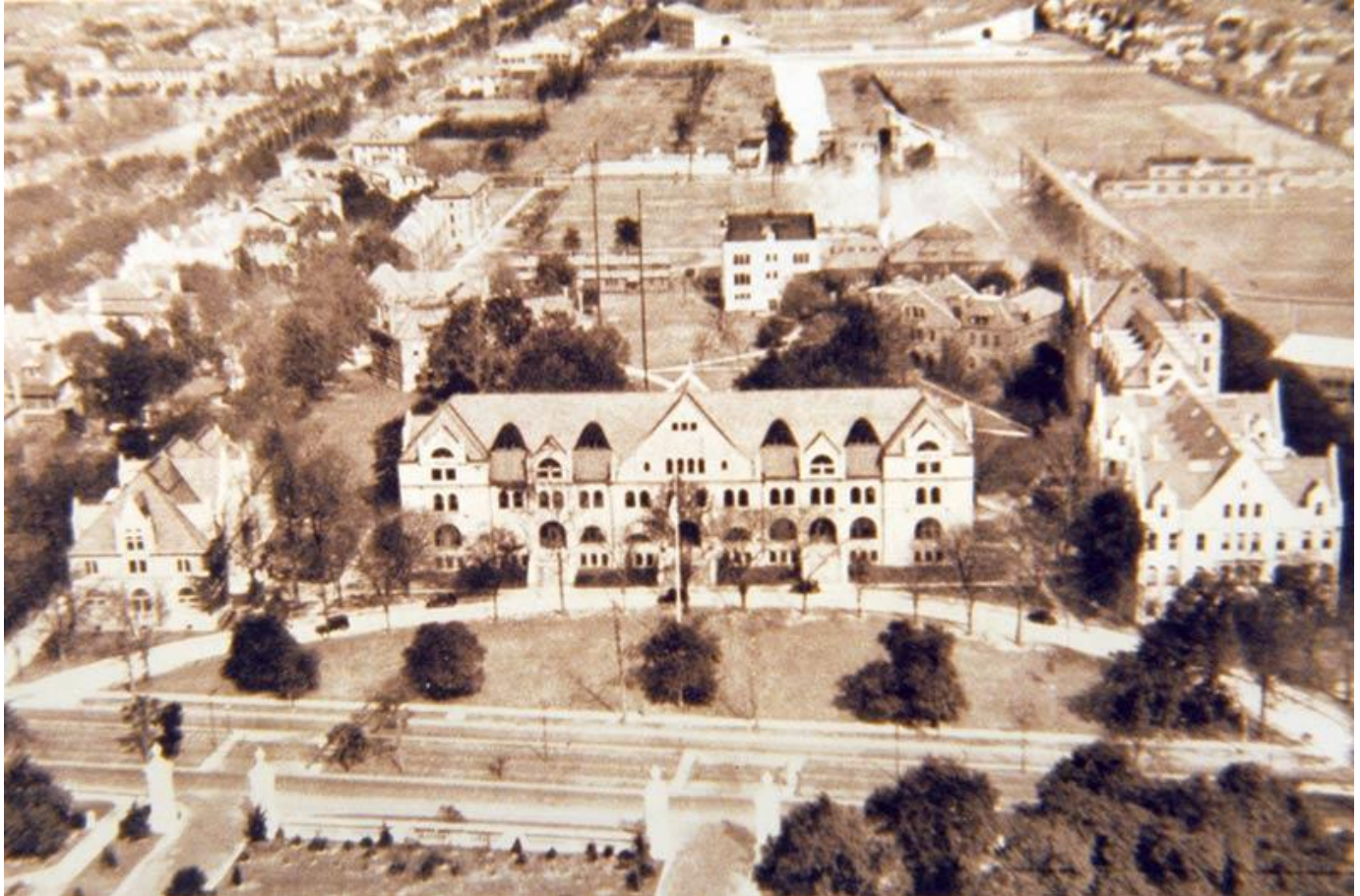


## Archival aerial

October 05, 2017 2:00 PM Photo from Tulane University Archives  
newwave@tulane.edu



This undated photograph offers a bird's-eye view from Gibson Hall and the academic quad all the way back to the first iteration of Tulane Stadium. While the exact date of the photo is not known, the existence of the stadium suggests that it was taken after 1926. Aerial photography dates back to 1858, but it became more common after World War I, when civilians adopted airplane-assisted technology used by the Army to create battle maps.