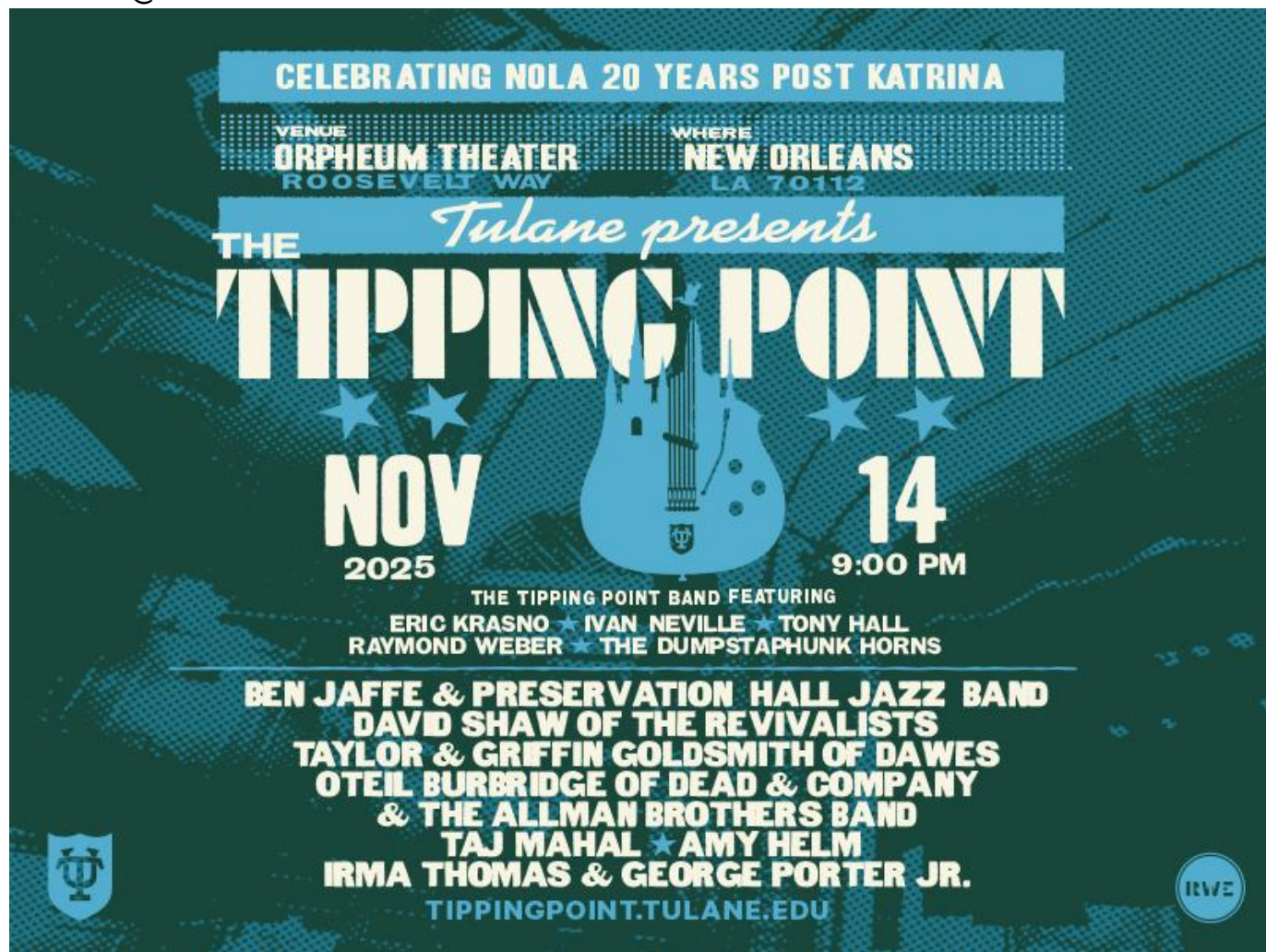


Tulane's Tipping Point 2025 announces all-star musical lineup for scholarship benefit

September 29, 2025 8:00 AM Mike Strecker
mstreck@tulane.edu



Proceeds from the annual event fund scholarships that enable students to attend Tulane regardless of their economic background. This year's concert also marks 20 years since Hurricane Katrina and supports the city of New Orleans by celebrating its unmatched musical spirit.

The Tipping Point, the benefit concert supporting scholarships at Tulane University and celebrating the spirit of the city of New Orleans, will return to the Orpheum Theater on Nov. 14, 2025, for its ninth edition. Executive produced by RWE Partners, this year's concert, which coincides with Tulane's [WAVE '25 Homecoming | Reunion |](#)

[Family Weekend](#), carries special meaning as it commemorates the 20th anniversary of Hurricane Katrina and honors the strength of New Orleans through the unifying power of music.

[The Tipping Point 2025](#) will feature a powerhouse lineup led by Ben Jaffe & Preservation Hall Jazz Band; Taylor & Griffin Goldsmith of Dawes; David Shaw of The Revivalists; and Oteil Burbridge, member of of Dead & Company and former member of The Allman Brothers Band. Joining them are legendary bluesman Taj Mahal, soulful vocalist Amy Helm, New Orleans treasure Irma Thomas and funk icon George Porter Jr. as a very special guest.

The evening will once again be under the musical direction of Grammy-winning guitarist and producer Eric Krasno, with Ivan Neville, Tony Hall, Raymond Weber and the Dumpstaphunk Horns forming the foundation of The Tipping Point Band. Together, these artists will deliver a night of unforgettable performances rooted in the enduring spirit of the Big Easy.

“The Tipping Point brings some of the country’s top musicians together for a special evening devoted to ensuring that cost is no barrier for any student who dreams of pursuing a Tulane education,” said Tulane President Michael A. Fitts. “As we reflect on the 20 years since Hurricane Katrina, this concert embodies our shared commitment to expanding opportunity for students who will shape the future of New Orleans.”

Since its inception, The Tipping Point has stood alone as the only concert of its kind in the U.S. that directly supports a university. Proceeds from the annual event fund scholarships that enable students to attend Tulane regardless of their economic background. This year’s concert also marks 20 years since Hurricane Katrina and supports the city of New Orleans by celebrating its unmatched musical spirit.

“The Tipping Point thrives because of the extraordinary talent that has always been at the heart of New Orleans,” said Nicole Rechter, co-founder of RWE Partners. “Each year we’re honored to unite that homegrown brilliance with artists from across the country, creating a one-night celebration that supports the city and carries forward the legacy of its music.”

Produced by RWE Partners — led by Rechter and Greg Williamson — The Tipping Point has become a cornerstone of Tulane’s philanthropic and cultural calendar. RWE’s expertise in producing world-class music events, including Love Rocks NYC

and The Soho Sessions, has helped raise more than \$75 million for nonprofits nationwide.

Past Tipping Point performers have included Emmylou Harris, Billy F Gibbons, Ziggy Marley, Chris Robinson, Grace Potter, Christone “Kingfish” Ingram, Warren Haynes, Joe Bonamassa, Stephen Marley, Lukas Nelson, Mavis Staples and more. Each year, the concert unites top talent and New Orleans’ beloved music community to support Tulane students and honor the city’s enduring spirit.

For more information and to purchase tickets, visit TippingPoint.Tulane.edu.