

## [New campus exhibits showcase homes and yachts](#)

August 22, 2016 3:00 PM Alicia Duplessis Jasmin  
aduples@tulane.edu



This photo of Thomas Sully's first yacht 'Helen', ca. 1893, is among several items in the exhibit "Thomas Sully: At Home and Leisure," which is on display in the Southeastern Architectural Archive through June 2017. (Photo from Southeastern Architectural Archives, Special Collections Division, Tulane University Libraries)

The [Southeastern Architectural Archive](#) (SEAA) at Tulane University opens two new exhibits this week on the uptown campus. The first features home and yacht designs by Thomas Sully (1855-1939) and the other features the works of New Orleans artist Grace Blethen Dunn (1885-1970).

In "Thomas Sully: At Home and at Leisure," exhibit curator and SEAA archivist Kevin Williams showcases residences and yachts designed by Sully from 1890 through 1915. On display through June 3, 2017, are original drawings, period blueprints and

a collection of original photographs.

“There is so little known about Sully’s personal life that it took quite a bit of research to gather the information,” said Williams. “In the past, we’ve shown the work that Sully did for his clients, but this exhibit focuses on the homes and yachts he built for himself.”

Also included are original photographs of Sully’s hunting and fishing expeditions on his yacht *Helen* on the rivers and bayous of Louisiana from the 1890s. These images have never been presented to the public until now.

“Drawings of Grace Dunn for the WPA” is another exhibit currently on display at SEAA through Dec. 15, 2017.

Dunn was a Newcomb College-trained artist whose work was commissioned through the Works Progress Administration (WPA). The exhibit features original ink and pencil drawings from two WPA publications, *New Orleans City Guide* (1938), and *Louisiana: A Guide to the State* (1941).

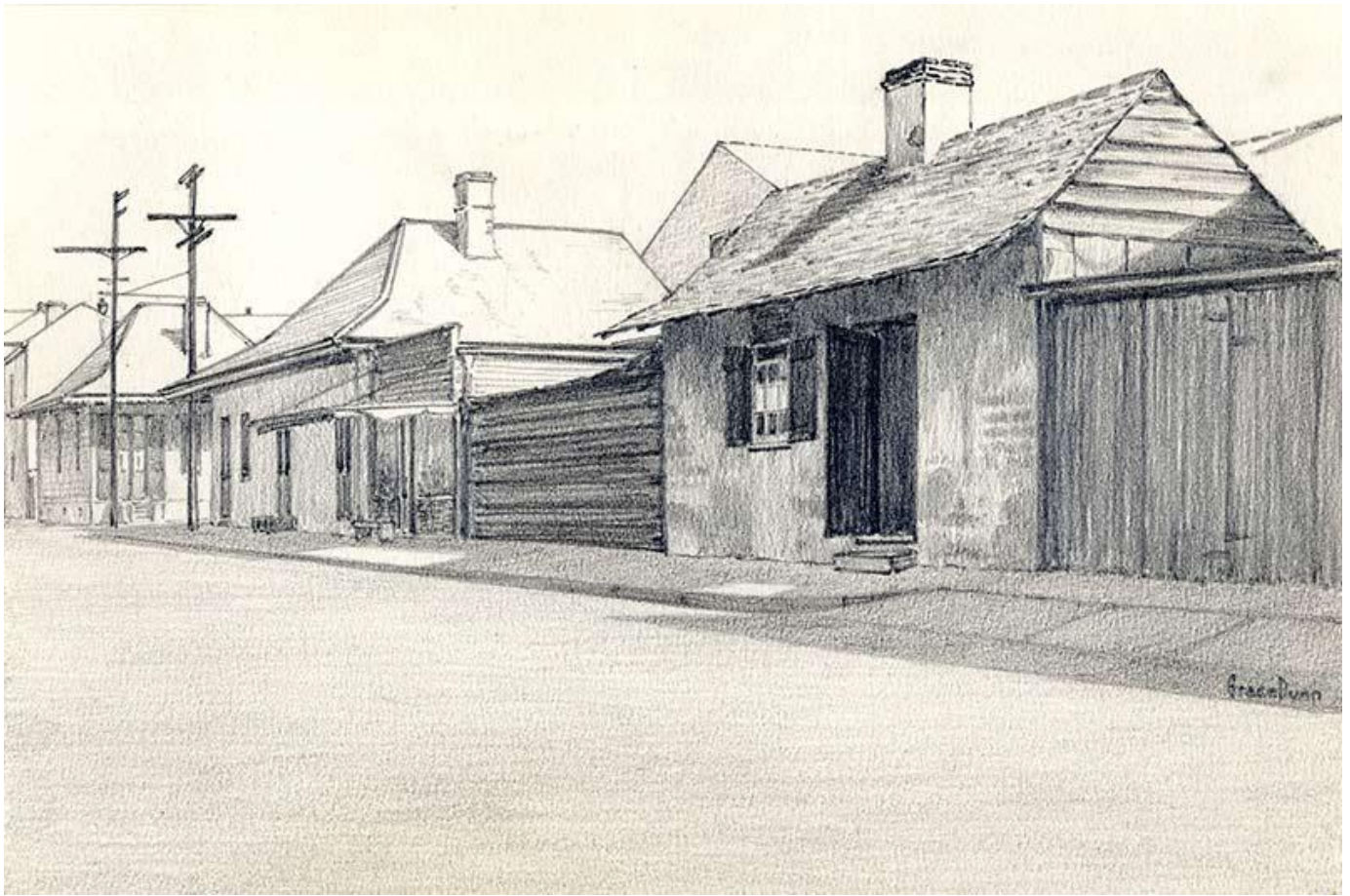
This exhibit is part of NOLA4Women’s city-wide exhibitions, “Women of New Orleans: Builders and Rebuilders,” celebrating the tricentennial of New Orleans and is also curated by Williams.

The SEAA is located in Jones Hall at 6801 Freret St. in room 300. Hours are 9 a.m.–12 p.m. and 1–5 p.m., Monday through Friday. Admission is free and open to the public.

For more information contact Kevin Williams at [kevinw@tulane.edu](mailto:kevinw@tulane.edu).

“In the past, we’ve shown the work that Sully did for his clients, but this exhibit focuses on the homes and yachts he built for himself.”

Kevin Williams, SEAA archivist



This pencil drawing by Grace Dunn shows the 700 block of South Liberty Street in New Orleans ca. 1930s. (Photo from Southeastern Architectural Archive, Special Collections Division, Tulane University Libraries)