

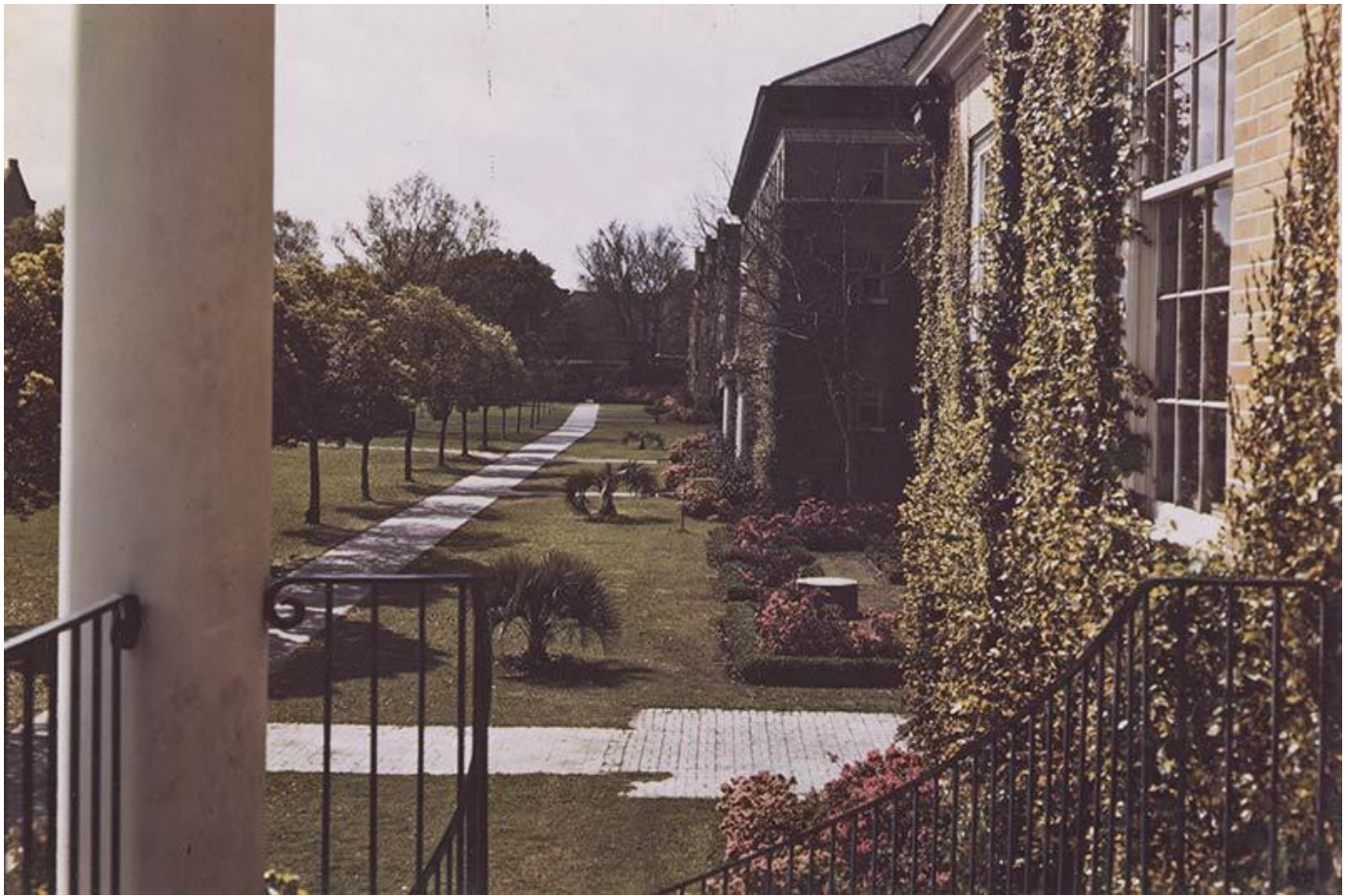
## Memory lane

October 13, 2016 2:00 PM Photo by Leon Trice from the Louisiana Research Collection

[newwave@tulane.edu](mailto:newwave@tulane.edu)

The old Tulane Student Center sits on the site now occupied by Percival Stern Hall. The building originally housed offices of the Manager of Student Activities, the Alumni Association and Student Publications, and included game and lounge rooms as well as a dance floor and a soda fountain.





The university dedicated the Student Center at Homecoming, Nov. 15, 1940; the building was razed in 1969 to make way for Stern. The view from the porch of the Student Center shows the sidewalk in front of an ivy-covered Alcee Fortier Hall and Mussafer Hall toward Cudd Hall.